

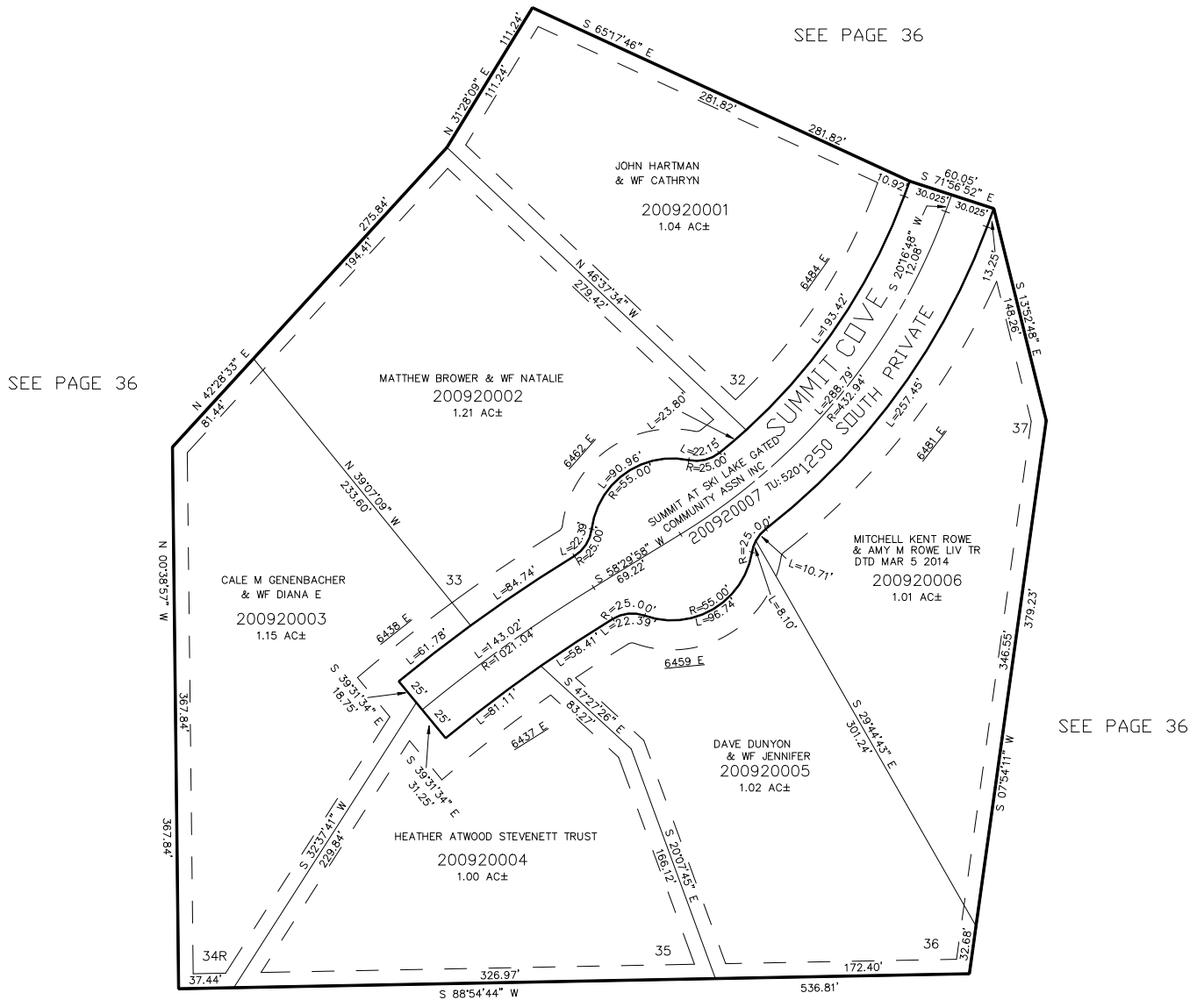
PART OF THE NW.1/4, OF SECTION 24, T.6N., R.1E., S.L.B. & M.

THE SUMMIT AT SKI LAKE No. 8

IN WEBER COUNTY

TAXING UNIT: 58, 520

SCALE 1" = 60'



FOR COMPLETE ENG DATA SEE
ORIGINAL DEDICATION PLAT IN
BOOK 61, PAGE 43 OF RECORDS.

10' UTILITY & DRAINAGE EASEMENTS EACH
SIDE OF PROPERTY LINES AS INDICATED
BY DASHED LINES EXCEPT AS OTHERWISE
SHOWN.

FOR TAX PURPOSES ONLY